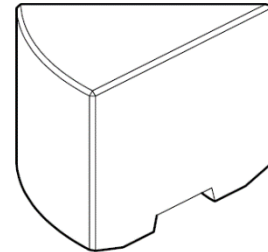


### Product: Corner 45°

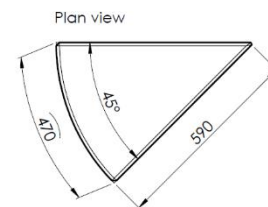
#### Description:

Modular 45° corner unit for the Adapt range, designed to be used in an arrangement. Precast concrete bench.



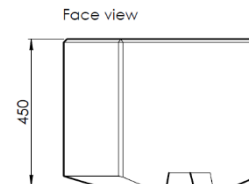
#### Colour: Available in standard colours

White: BCPWH03, BCPWH06  
Light Grey: BCPLG01, BCPLG02, BCPLG05  
Dark Grey: BCPBL02  
Black: BCPBL03  
Buff: BCPYL01  
Other colours available on request



#### Finish:

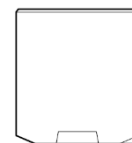
Concrete: Light Acid Etched  
Timber: N/A  
Other finishes available on request



#### Fixing: Surface Fixed

Unit should be placed on finished surface, using appropriate lifting equipment, no additional fixing required.  
Optional fixing kit to secure the unit to foundation

Side view



#### Packing:

Wrapped, banded & protected. 1 unit per pallet.  
Unit to be removed from the pallet before installation.

#### Standard Shipping:

Dedicated delivery or pallet service available by request

#### Technical Details:

Length: 470mm  
Depth: 600mm  
Height: 450mm  
Weight: 145Kg